

1320 29TH STREET, NW

WASHINGTON, DC 20007

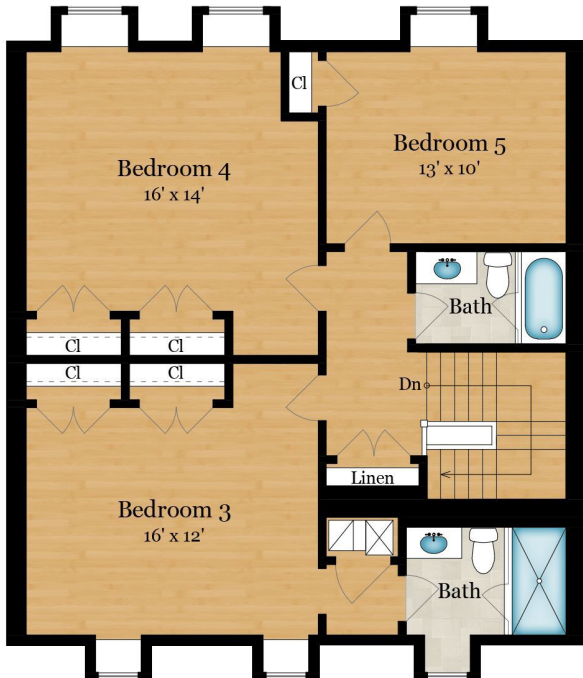


MAIN LEVEL
1,170 SQ FT

Entry



UPPER LEVEL 1
1,160 SQ FT

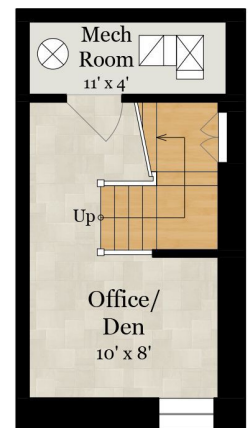


UPPER LEVEL 2
1,045 SQ FT

Estimated Total Finished Square Footage: 3,595 SQ FT

Above-Grade: 3,375 SQ FT Below-Grade: 220 SQ FT
Plus 55 SQ FT Mech Room on Lower Level
Calculated per ANSI Standard Z765-2003.

* Estimated Total Finished & Unfinished Square Footage: 3,650 SQ FT



LOWER LEVEL
220 SQ FT

Rendering by Floor Plan Visuals.
All measurements are approximate. While deemed reliable, no information on these floor plans should be relied upon without independent verification.